

Leo's Family Newsletter

Friday, April 12th 2019 Ed. #13



ANNOUNCEMENTS

- Field Study permission forms (pink) and lunch order form (yellow) were due today, Friday April 12th. If this is news to you, check in with your student and turn them in ASAP. Forms went home on Tuesday April 9th.
- [Here is the link](#) to the OMSI Schoolpay page, where you can pay the suggested \$15-\$20 field study donation. All students will attend the field studies regardless of funds.
- 3rd Quarter Report cards went home in the mail and should arrive this week. If you do not receive one, please check in with the office about your address.
- Student led conferences are on Thursday, April 25th (NOT the 26th as my last newsletter stated). This is a time for students to show their work portfolios and talk about their own learning. It's an open door event, lasting from 3:30-6:30pm.
- [Scholastic Book Orders](#) are due on April 19th for April. Our class code is TVTYG.

CONNECT TO YOUR KID

Cook a recipe together, using fractions along the way. As a challenge you can try to double or half the recipe!

UPCOMING EVENTS

**4/25 Student Led Conferences
3:30-6:30pm**

5/9 OMSI Field Study

5/10 Afternoon early release (SES only)

5/11 SES Auction

5/30-5/31 5th Grade Overnight Trip

6/5 Field Study to the Gorge

**6/11 Updated LAST day of school
*District decision due to snow days**

SPRING 2019 QSA SHIRTS ARE HERE!

ORDERS YOURS TODAY HERE: WWW.CUSTOMINK.COM/FUNDRAISING/SUNNYSIDEQSATSHIRTS

GOOD TO KNOW: STATE TESTING (NEXT WEEK!!!)

We have testing coming up in April and May. Below are the dates our students have testing. While we will take the test seriously, we also work hard to not make it the central focus of these weeks of learning. On testing weeks, help your child be successful by the following testing tips:

1. Go to bed early and get at least 8 to 9 hours of sleep
2. Eat a big breakfast, including protein
3. Arrive to school on time
4. Try your best to avoid big conversations/stressful topics before school on these dates
5. Encourage your student to try their best, while also affirming that these tests are hard and not a measure of their intelligence
6. Help your student find a great library book or two to read during these weeks, as reading to self is often the early finishers option

~~(5ths only) Science: March 18th and 19th~~
English Language Arts: April 15th through April 19th
Math: May 13th through 17th

CLASS POEM PACING

WHEN GREAT TREES FALL BY MAYA ANGELOU

POEM MEMORIZED BY: MAY 2ND

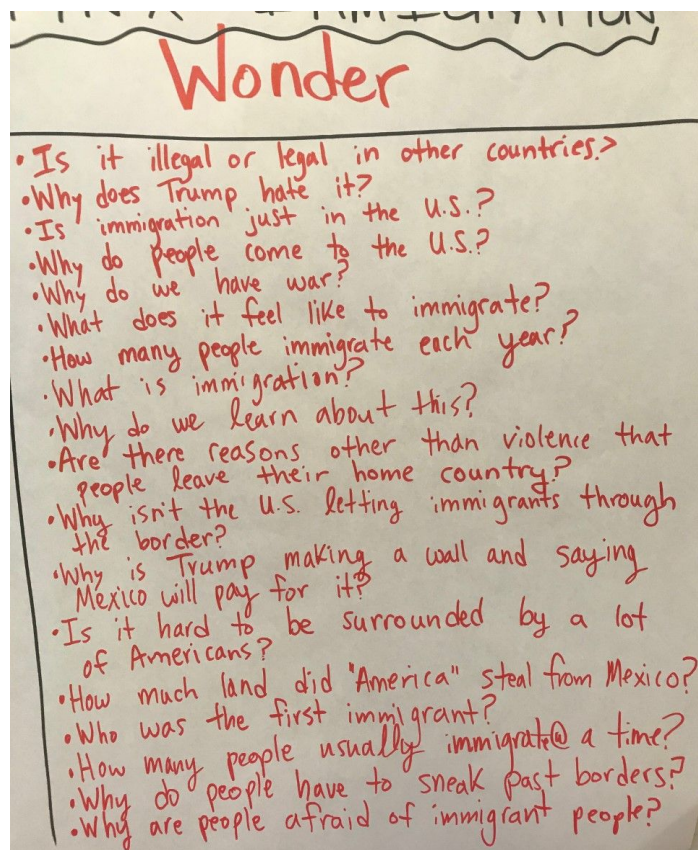
So Far:

When great trees fall,
rocks on distant hills
shudder,
lions hunker down
in tall grasses,
and even elephants
lumber after safety

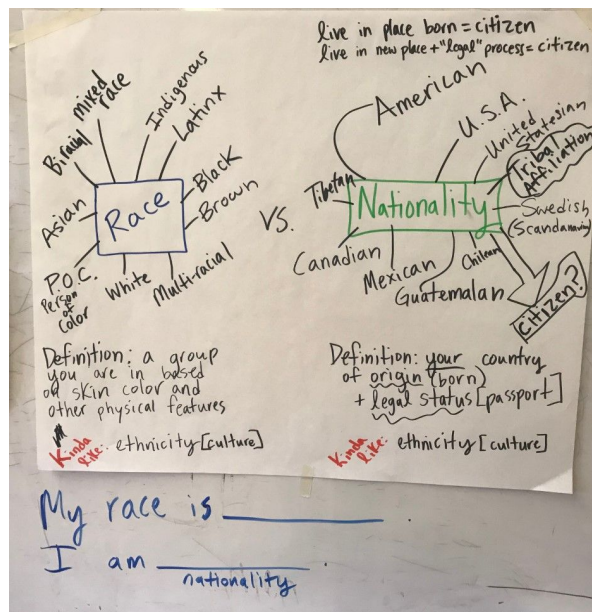
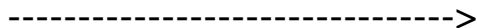
Next Up:

when great trees fall
in forests,
small things recoil into
silence,
their senses
eroded beyond fear

IMMIGRATION UNIT LAUNCH



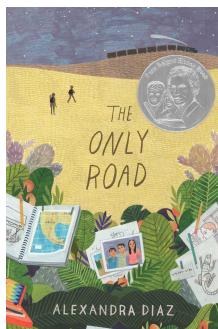
Learning about the differences between race and nationality (and how ethnicity is similar but not the same thing)



WHAT WE'RE LEARNING

LITERACY:

Our next social studies unit is Latinx Immigration. I am planning this unit with intention and care: to be relevant, accurate, and centered on voices of Latinx immigrant voices. We will be reading *The Only Road* by Alexandra Diaz as a read aloud and anchor to the unit. Students will also read books featuring either/both immigrant peoples and/or Latinx people and stories in small reading groups over the next couple weeks.



MATH:

We have entered a mathematical time when both grades are at least in the same topic... **FRACTIONS!** Yippie. 4ths are working on comfortably naming/drawing fractions, finding equivalent fractions, and using drawings of fractions to explain their reasoning. 5ths continue to practice switching between improper and mixed number fractions, are learning how to make a line plot using fraction data, and finally are adding and subtracting fractions with unlike denominators. This is a lengthy fractions unit for both grades, so we are moving at a cozy pace for our brains.

SPRING FIELD STUDIES

- Friday, May 3rd: Portland Mercado
- Thursday, May 9th: OMSI
- Thursday, May 23rd: 5ths to Oaks Park
4ths @ SES w/Leo
- Thursday & Friday: 5th Grade Overnight/
May 30th-31st 4ths @ SES w/Candace
- Wednesday, June 5th: Gorge Hike

FIELD STUDIES TO DO'S

1. Fill out the field trip form (one pink paper for our 4x5 field studies)
2. [Use this link to donate](#) to school fund to help pay for our labs, movie, transportation, and admission to OMSI or bring cash to the front office to give to Michelle.
3. Make sure your student arrives on time and ready on all of the field study dates.

Email: lsoell@pps.net

Email: lsoell@pps.net